

# INSTALLATION INSTRUCTIONS

DESCRIPTION: Frame Slider Kit  
 PART NUMBER: BS7-F11D0-V0  
 MODEL: '19~ YZF-R3



## WARNING

Please read and understand these instructions completely before installation to avoid possible injury, or damage to the accessory or vehicle.

## WARRANTY INFORMATION:

In the United States, see your Yamaha dealer for a copy of the Yamaha Genuine Parts and Accessories Limited Warranty Statement.

## NOTICE:

This installation requires a torque wrench and should be performed by an authorized Yamaha dealer or other qualified technician.

## DEALER OR INSTALLER:

These instructions contain important information for future reference and *must* be given to the customer.

## PARTS LIST:

No.	Part Number	Description	Qty
--	BS7-F11D0-V0	Frame Slider Kit	--
①	*	Left Slider	1
②	*	Left Side Fairing Brace	1
③	*	Left Side Brace	1
④	*	Left Side Slider Support.	1
⑤	*	Right Slider	1
⑥	*	Right Side Fairing Brace	1
⑦	*	Right Side Brace	1
⑧	*	Long Collar	1
⑨	*	M6x90mm Hex Flange Bolt	1
⑩	*	Right Side Slider Support.	1
⑪	*	Short Collar	3
⑫	*	M6x60mm Hex Flange Bolt	3
⑬	*	M5 Top Hat Spacer	4
⑭	*	M5x16mm Button Head Bolt	4

\* Part supplied with kit only and not available separately.

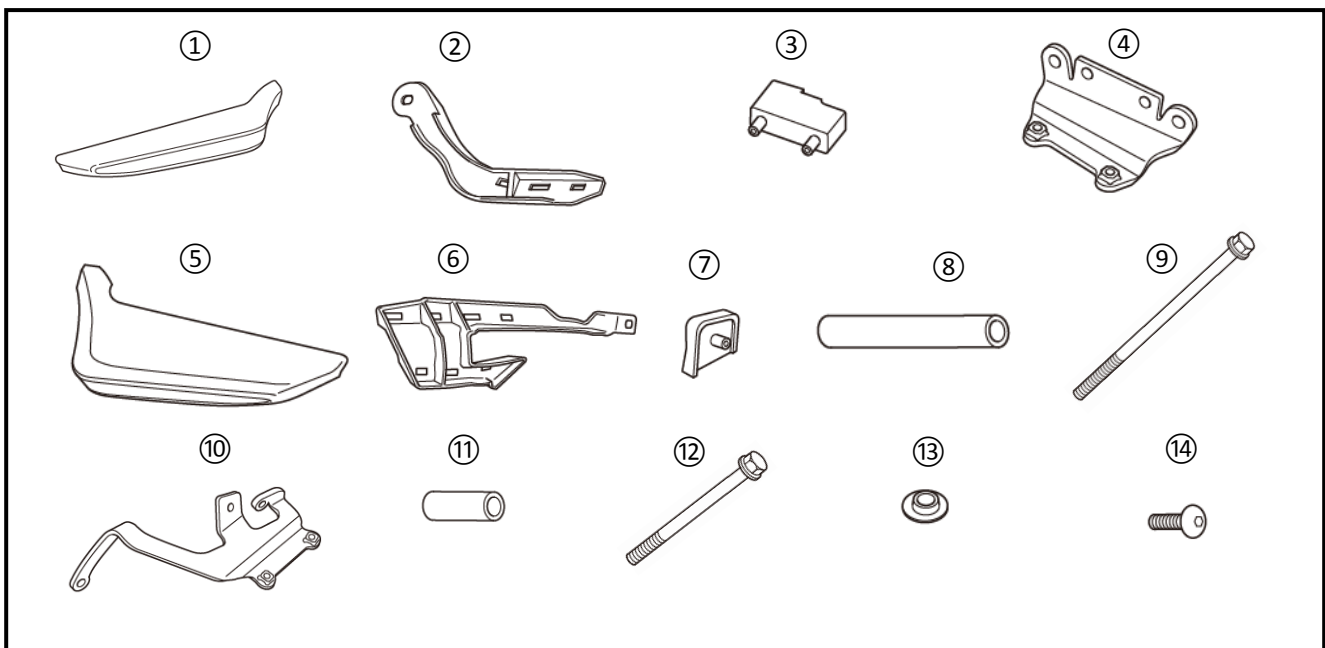


Fig. 1

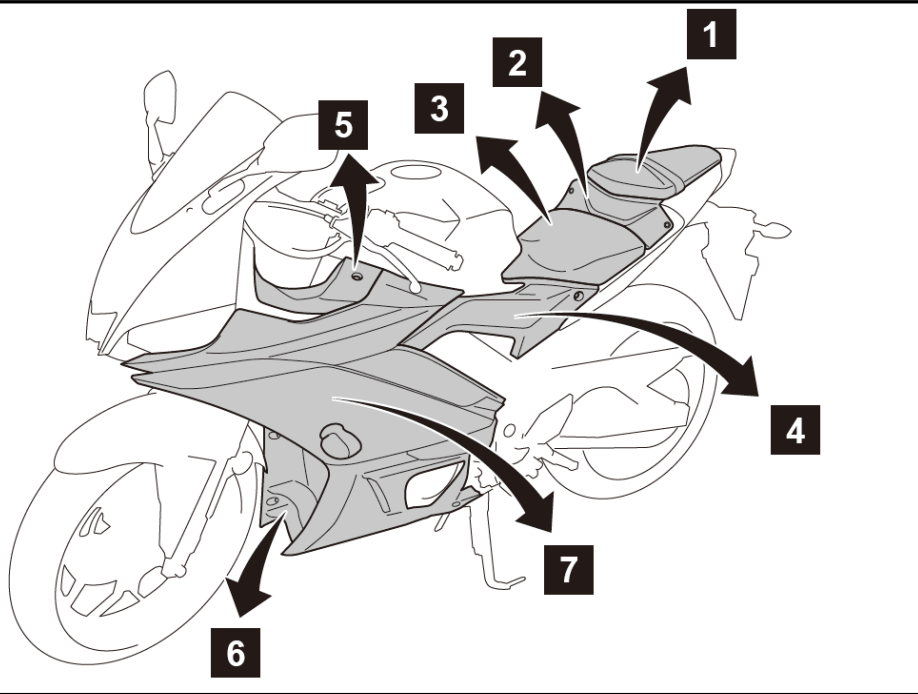
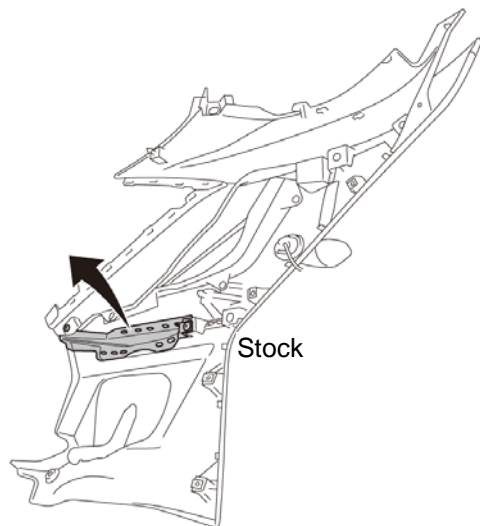


Fig. 2



**PREPARATION:**

- Stand motorcycle on a secure and level surface.
- Clean all mounting surfaces before beginning installation.

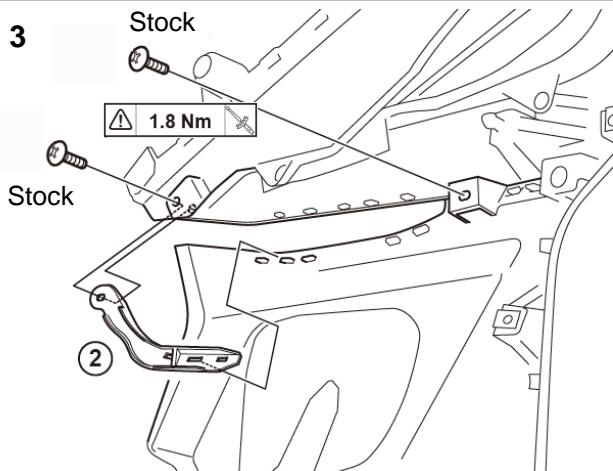
**INSTALLATION:**

1. Referring to the Owner's Manual as needed, remove the stock body panels from the front and sides of the motorcycle in the order of the numbered callouts; remove part 1, then part 2, then part 3 and on until you've removed parts 1 through 7. (Fig.1). Retain all fairing parts and fasteners for reinstallation.

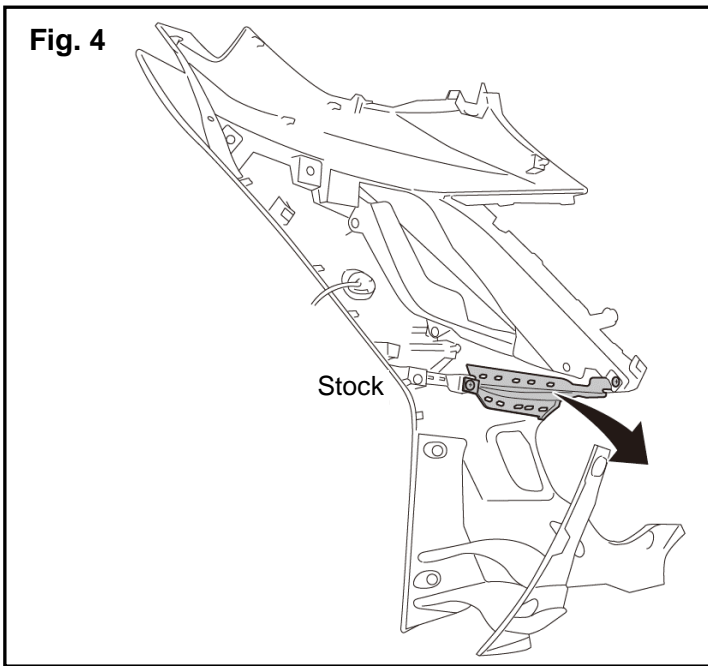
**NOTICE:**

**Set the fairing panels, painted side down, on a clean, soft work surface that will not mar the paint.**

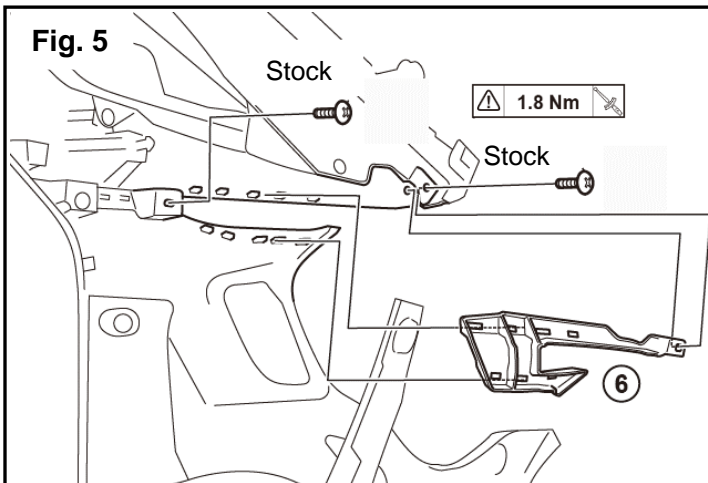
Fig. 3



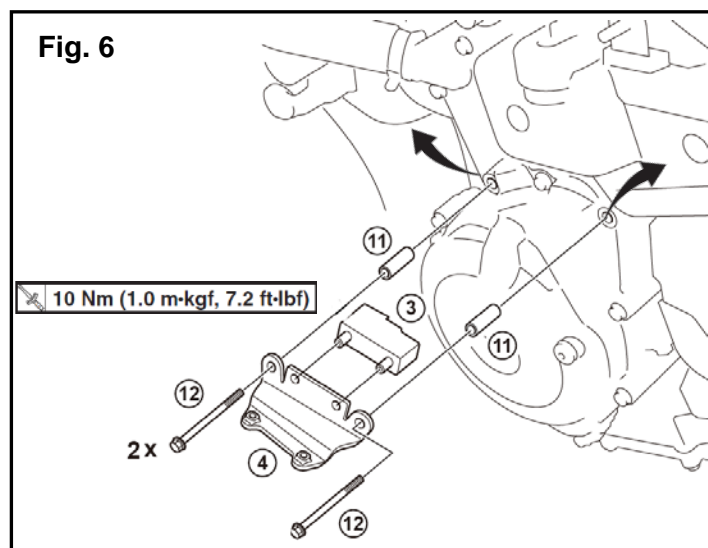
2. Locate stock fairing support on the back side of the stock left fairing and remove it. Retain the two screws for reuse. See Fig. 2.
3. Install the (2) Left Side Fairing Brace to the back side of the fairing with the two stock screws. Torque them to 1.8Nm. See Fig. 3



4. Locate the stock fairing support on the back side of the stock right fairing and remove it. Retain the two screws for reuse. See Fig. 4.

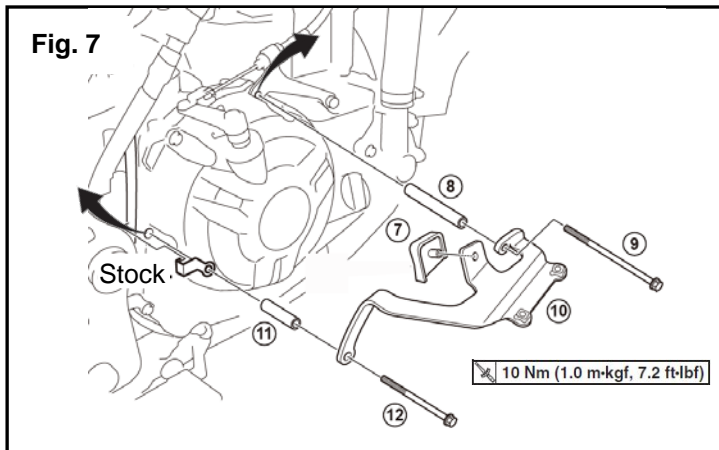


5. Install the (6) Right Side Fairing Brace to the back side of right fairing with the two stock screws. Torque them to 1.8Nm. See Fig. 5.



6. Working on the left side, remove the two stock bolts marked by arrows in Fig. 6. These bolts are not reused in this installation.

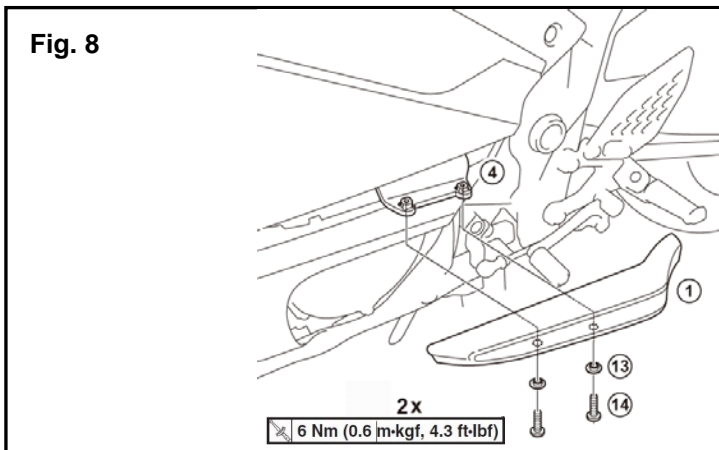
Install the two pegs in the (3) Spacer Block to the two holes in the (4) Left Side Slider Support. Install two (12) M6x60mm Hex Flange Bolts through the mount holes on the (4) Left Side Slider Support, through the two (11) Short Collars and into the engine. Torque the bolts to 10Nm (7.2 ft-lbf). See Fig. 6.



- Working on the right side, remove the two stock bolts marked by arrows in Fig. 7. These bolts are not reused in this installation. Retain the stock cable holder for reuse.

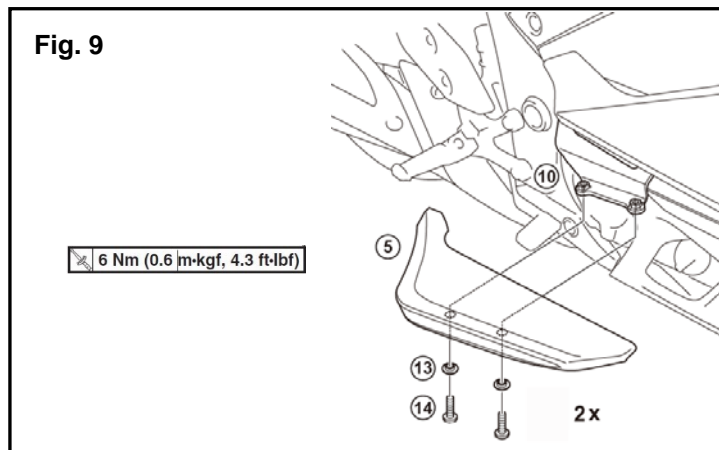
Install the peg in the (7) Right Side Brace to the hole in the (10) Right Side Slider Support. Install one (9) M6x90mm Hex Flange Bolt through the mount holes on the (10) Right Side Slider Support, through the (8) Long Collar and into the engine. Install one (12) M6x60mm Hex Flange Bolt through the mount holes on the (10) Right Side Slider Support, through the (11) Short Collar, through the stock cable holder, and into the engine. Torque the bolts to 10Nm (7.2 ft-lbf).

**Note:** The rear bolt also passes through a stock bracket. See Fig. 7.



- Working from the bottom on the left side, install the (1) Left Slider to the (4) Left Side Slider Support with two (14) M5x16mm Bolts and two (13) M5 Top Hat Spacers – as shown in Fig.8. Torque bolts to 6Nm (4.3 ft-lbf).

- Working from the bottom on the right side, install the (5) Right Slider to the (10) Right Side Slider Support with two (14) M5x16mm Bolts and two (13) M5 Top Hat Spacers – as shown in Fig.8. Torque bolts to 6Nm (4.3 ft-lbf).



**MAINTENANCE:**

Periodically, check torque on all hardware. If loose hardware is found, re-torque to specification.

**CARE AND CLEANING:**

Clean painted metal parts with a clean soft cloth and mild soap and water. Rinse and dry.

**CUSTOMER SERVICE:**

For further information see your Yamaha dealer.

**ESTIMATED TIME TO INSTALL: 0.8 HR**